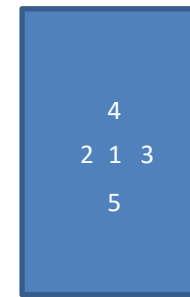
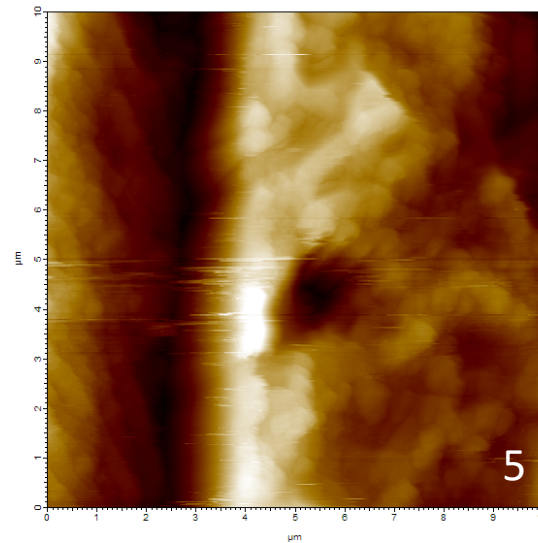
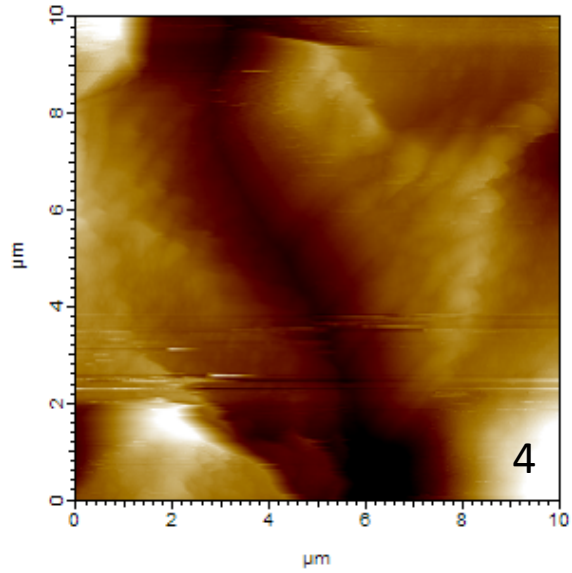
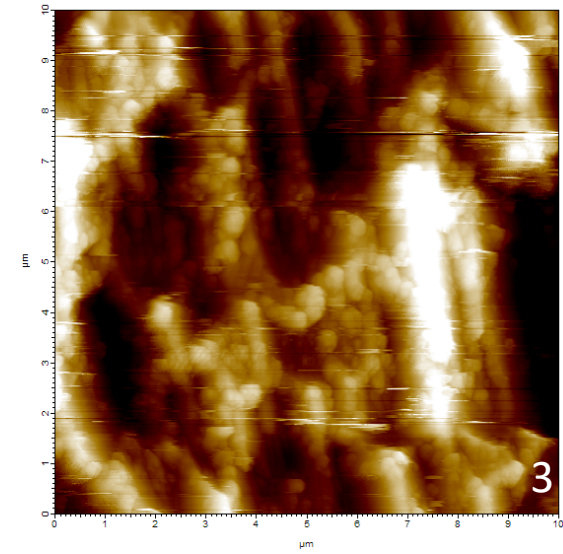
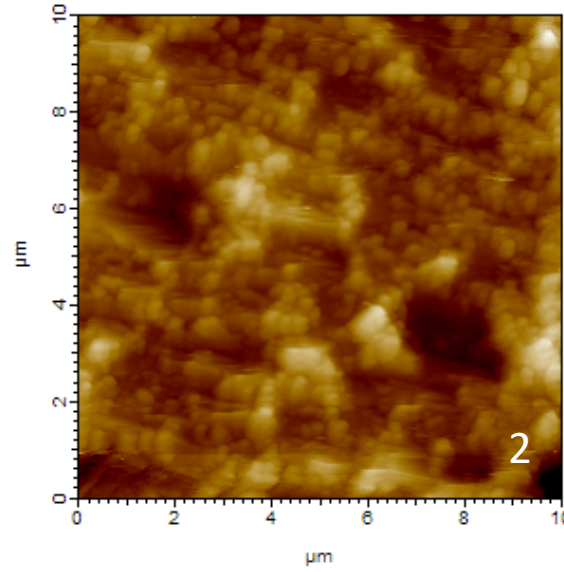
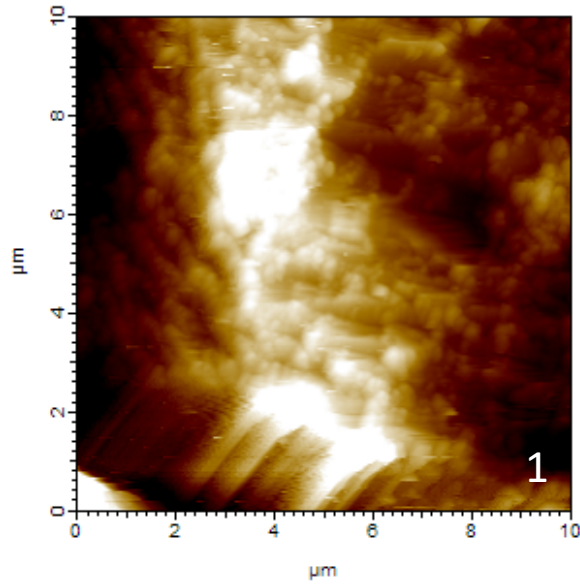
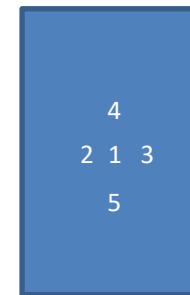
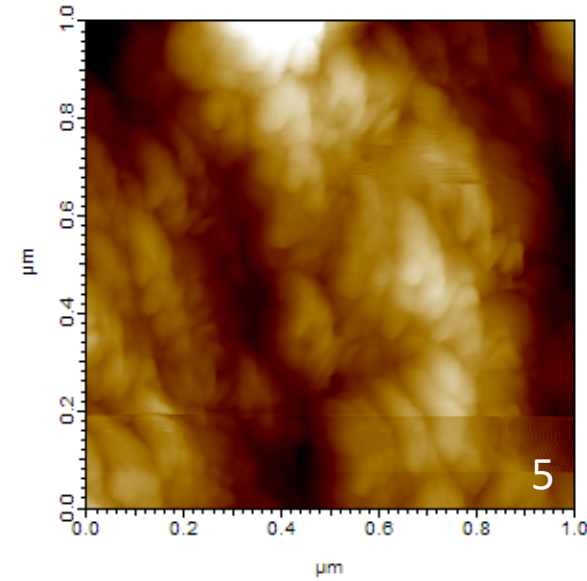
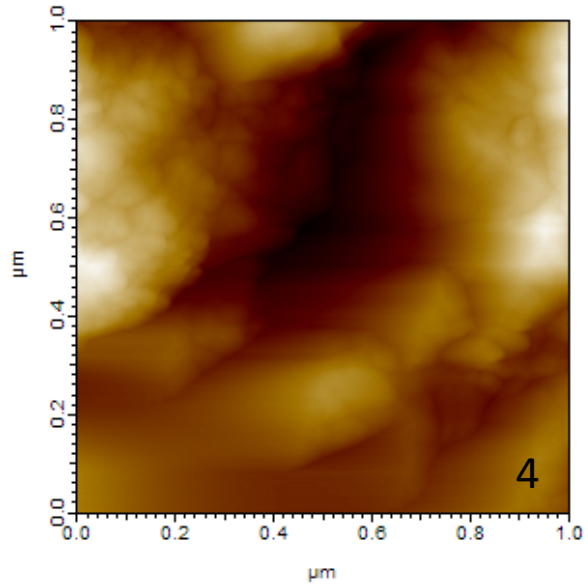
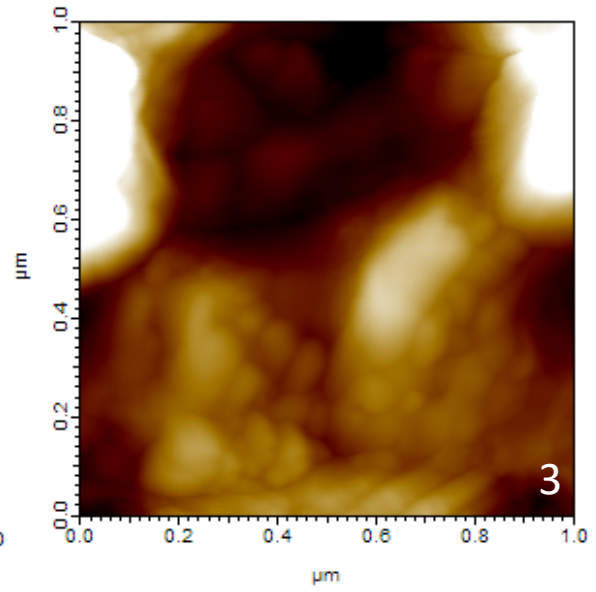
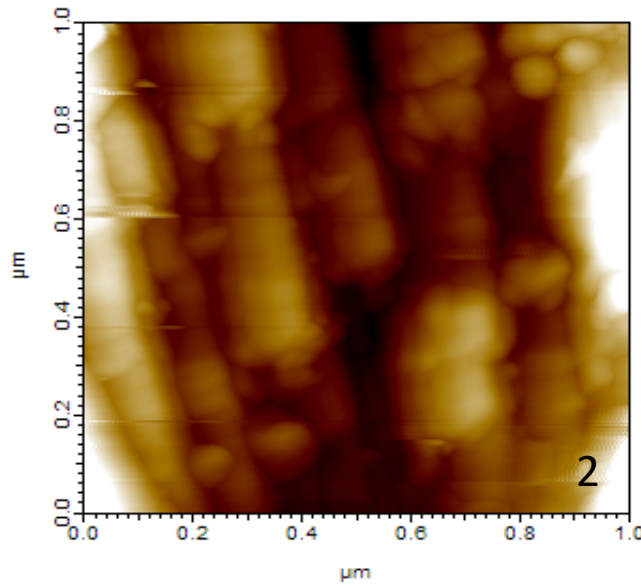
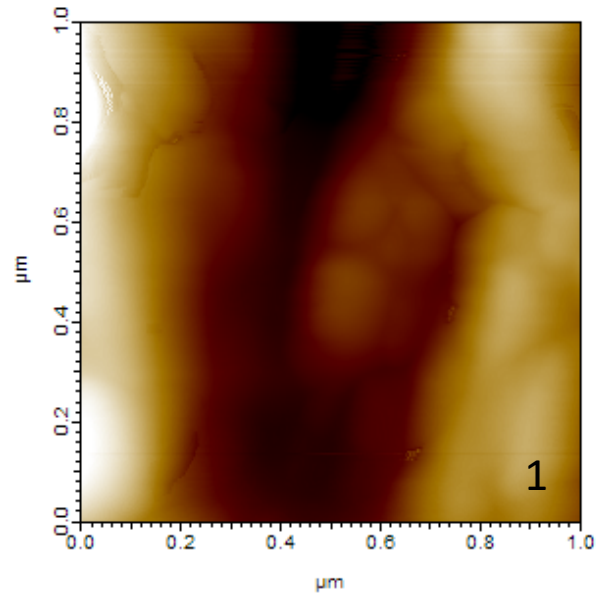


Pd90Rh10 #59 before electrolysis experiment with standard Si probe 150Al-G
Scan area=10um;Scan speed=0.5 Hz; Scan points=512;Scan direction=0°



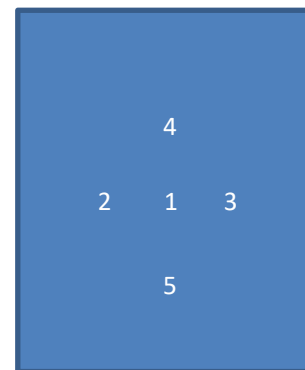
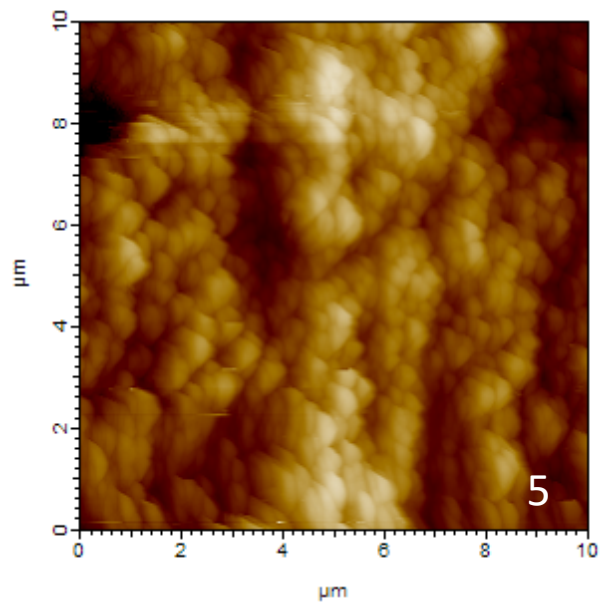
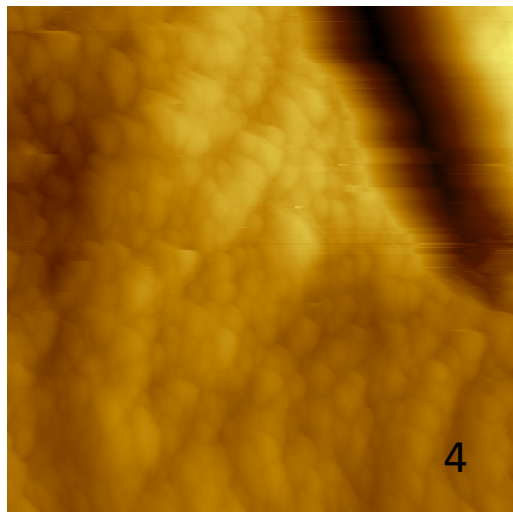
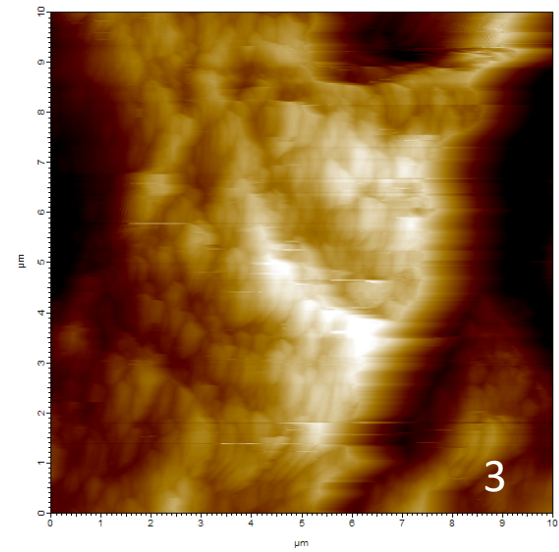
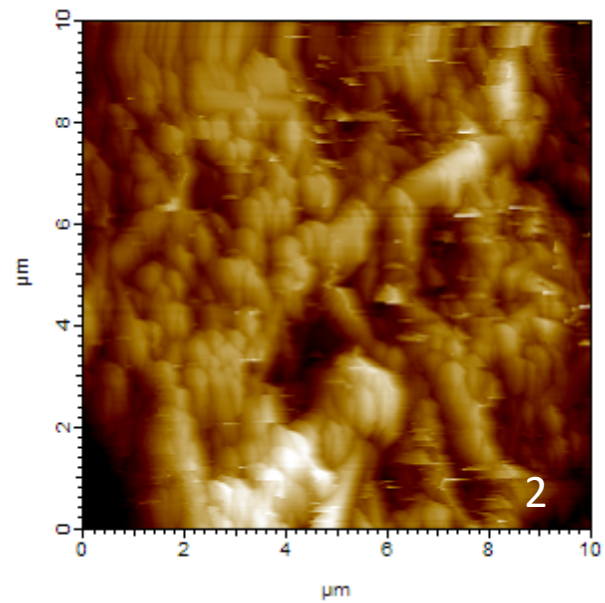
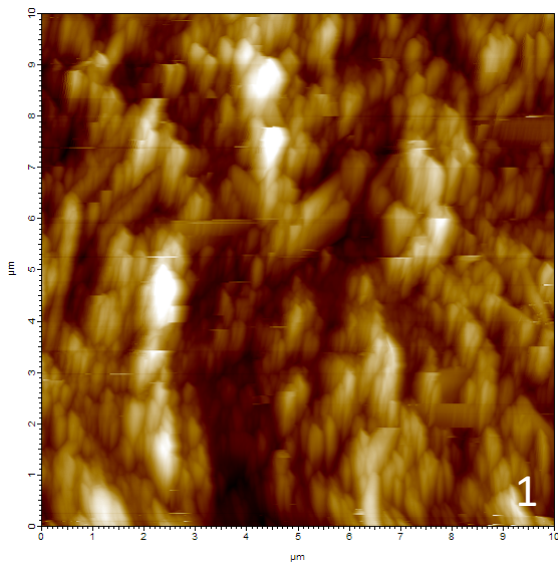
Scan Area

Pd90Rh10 #59 before electrolysis experiment with standard Si probe 150Al-G
Scan area=1um;Scan speed=0.5 Hz; Scan points=512;Scan direction=0°



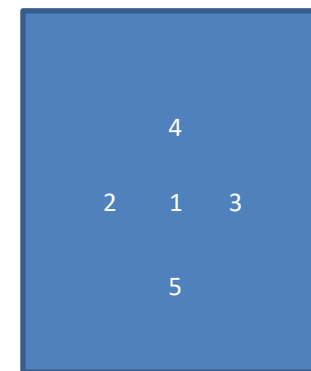
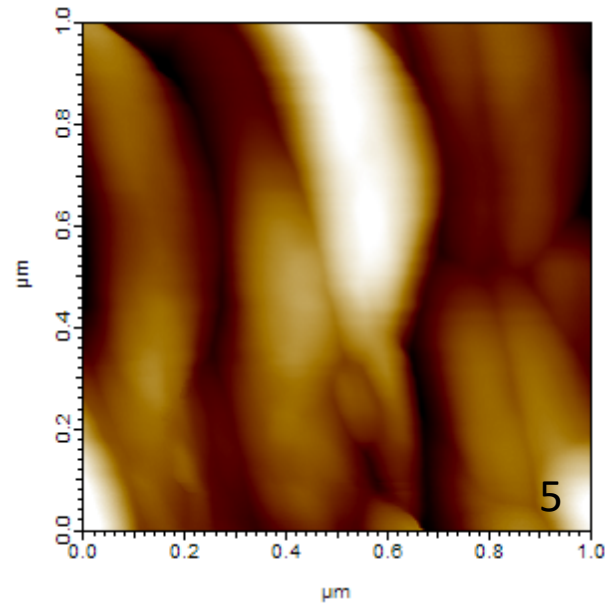
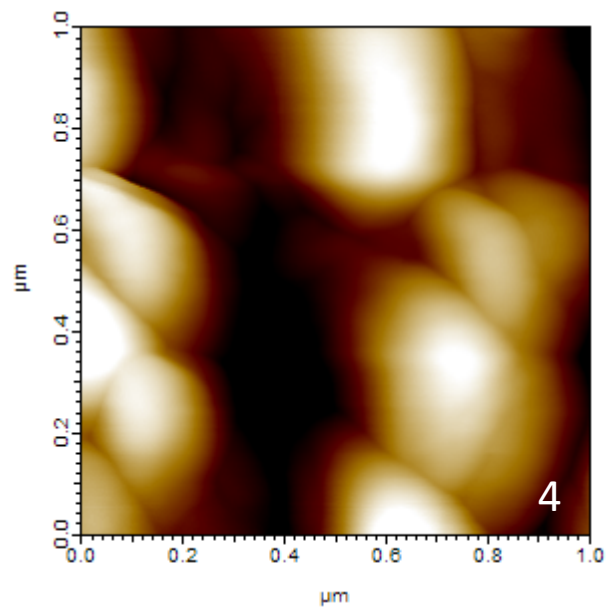
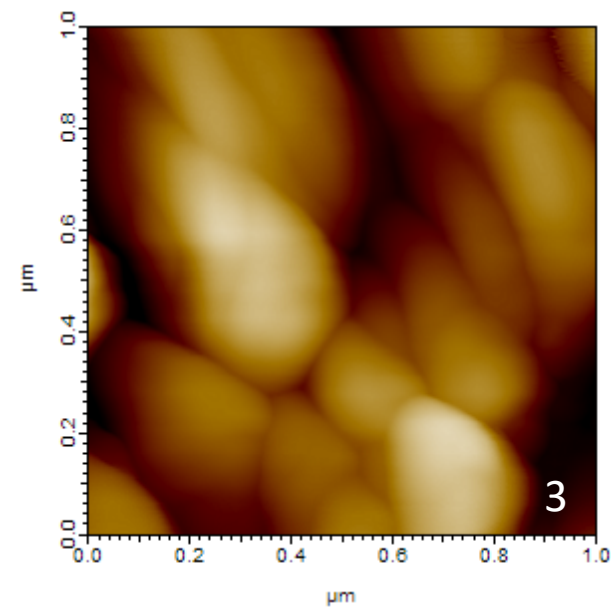
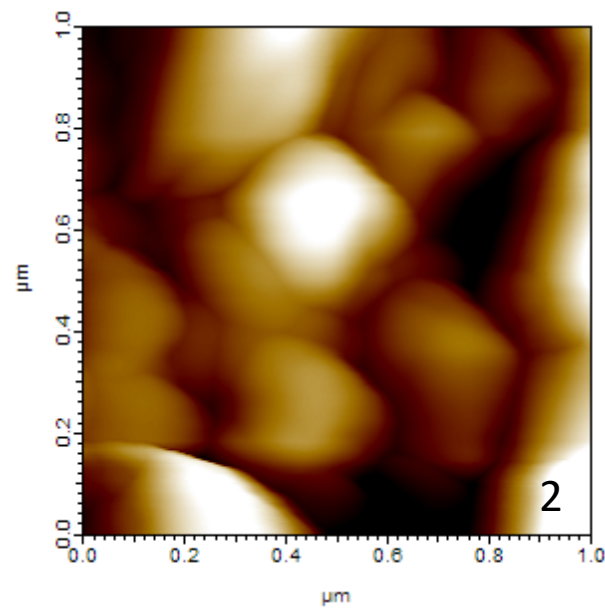
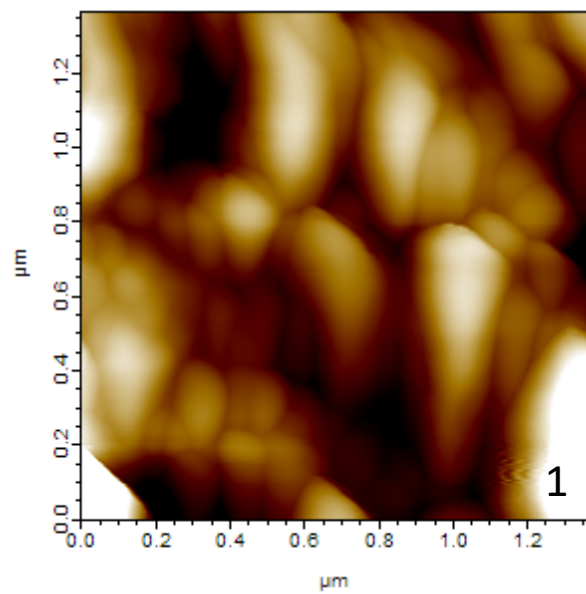
Scan Area

Pd90Rh10 #59 after electrolysis experiment with standard Si probe 150Al-G
Scan area=10um;Scan speed=0.5 Hz; Scan points=512;Scan direction=0°



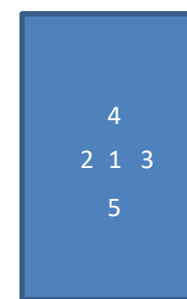
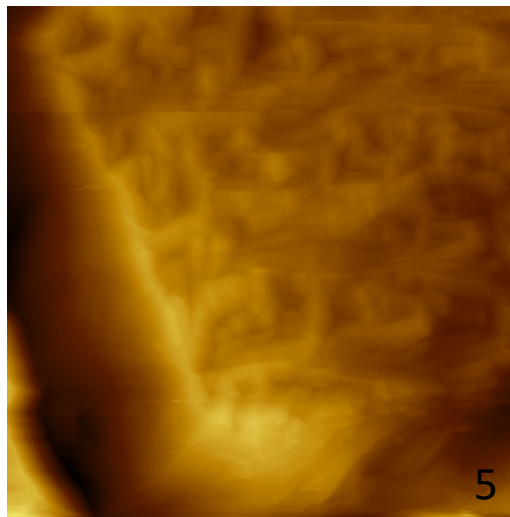
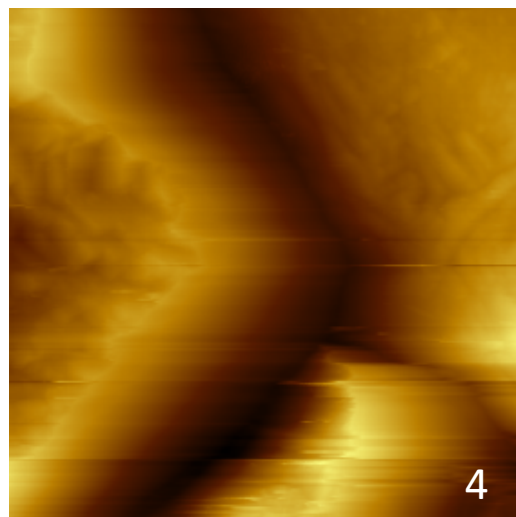
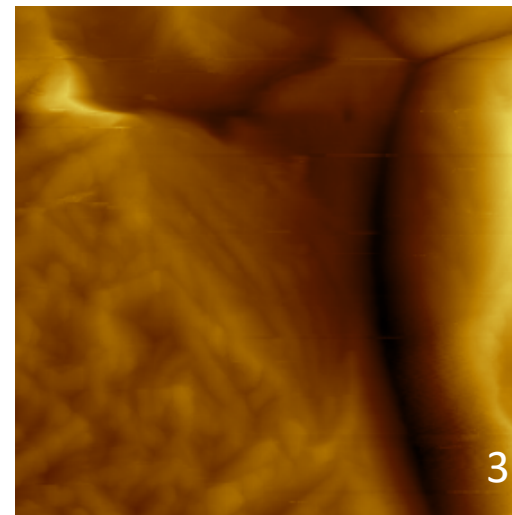
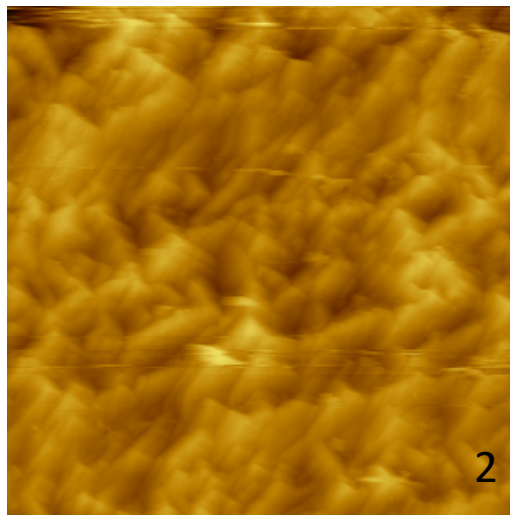
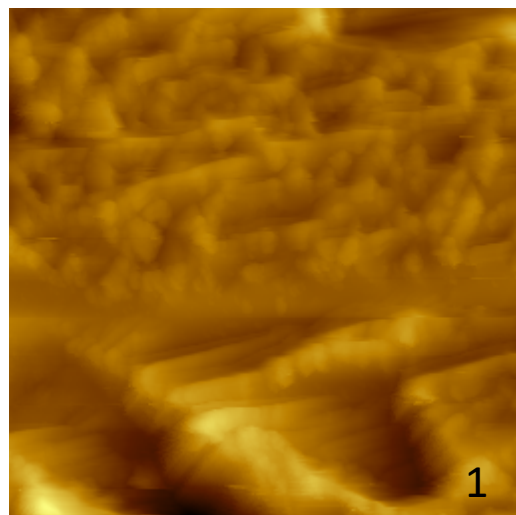
Scan Area

Pd90Rh10 #59 after electrolysis experiment with standard Si probe 150Al-G
Scan area=1um;Scan speed=0.5 Hz; Scan points=512;Scan direction=0°



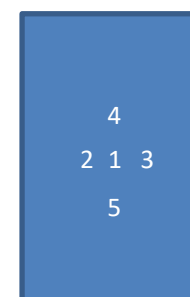
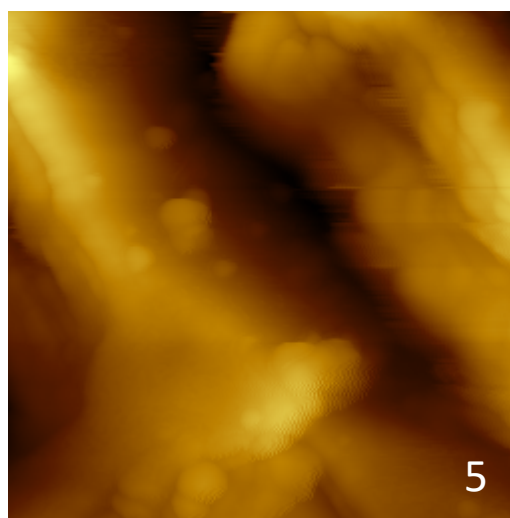
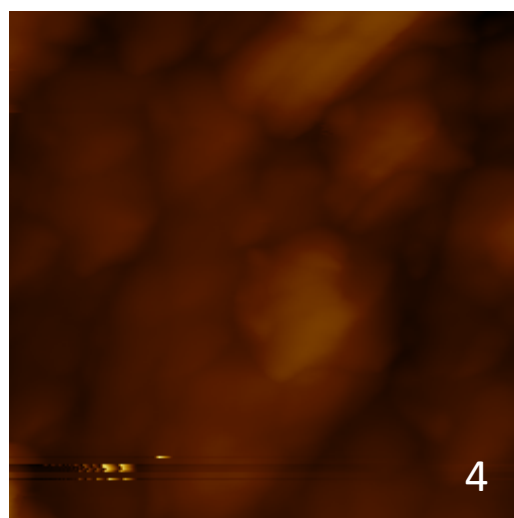
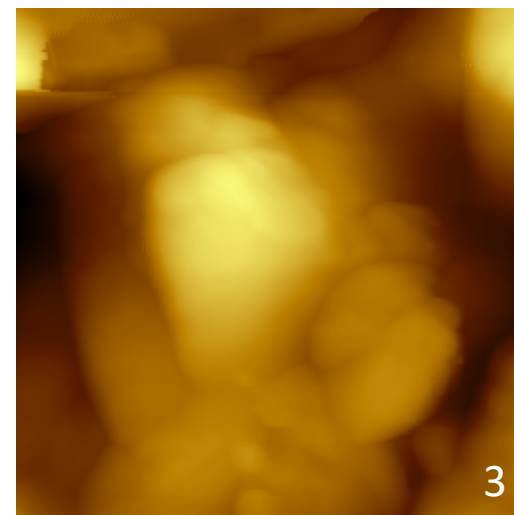
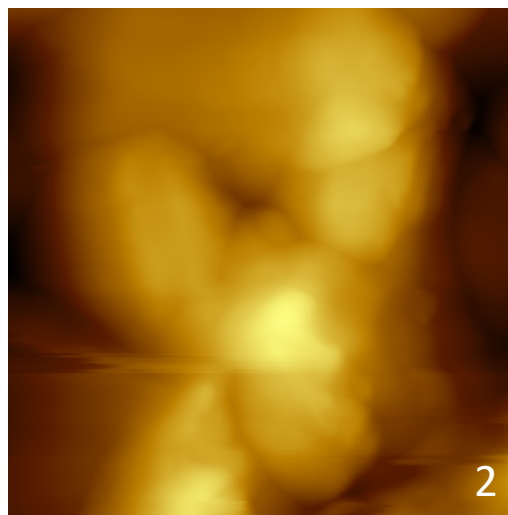
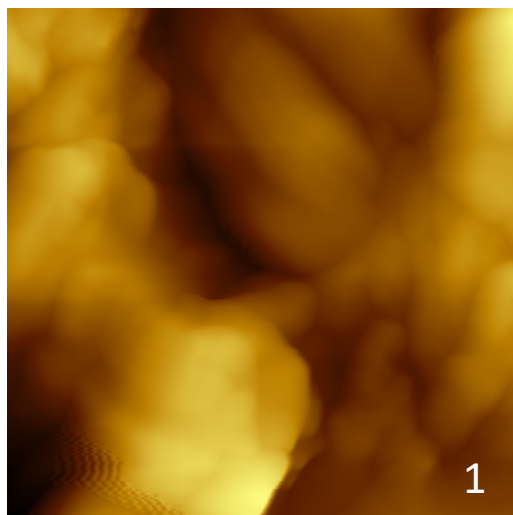
Scan Area

Pd90Rh10 #60 before electrolysis experiment with standard Si probe 150Al-G
Scan area=10um;Scan speed=0.5 Hz; Scan points=512;Scan direction=0°



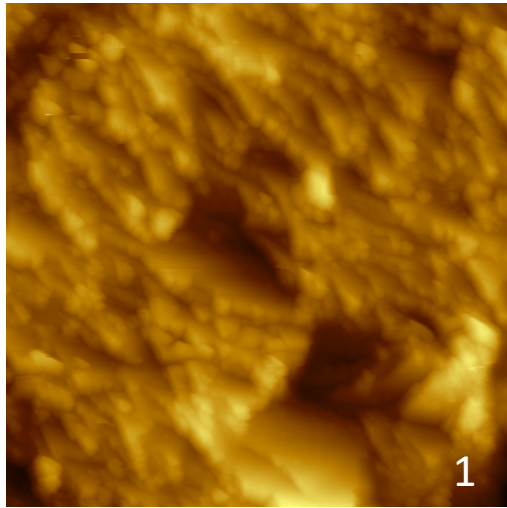
Scan Area

Pd90Rh10 #60 before electrolysis experiment with standard Si probe 150Al-G
Scan area=1um;Scan speed=0.5 Hz; Scan points=512;Scan direction=0°

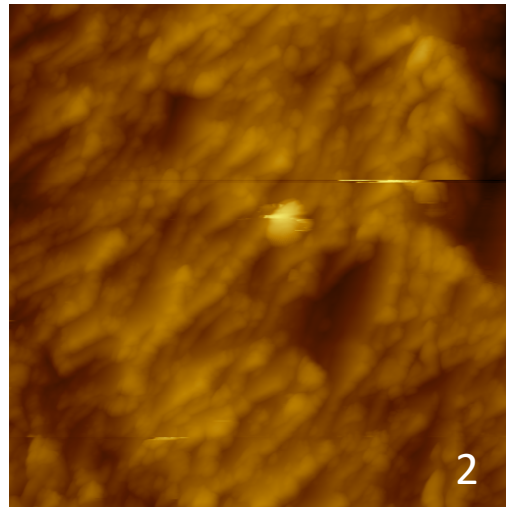


Scan Area

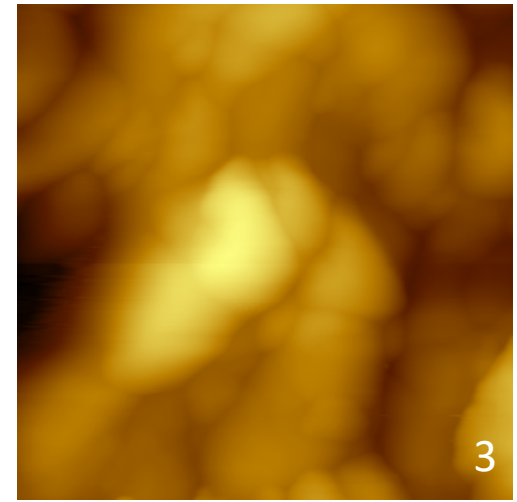
Pd90Rh10 #60 before electrolysis experiment with standard Si probe 150Al-G (New)



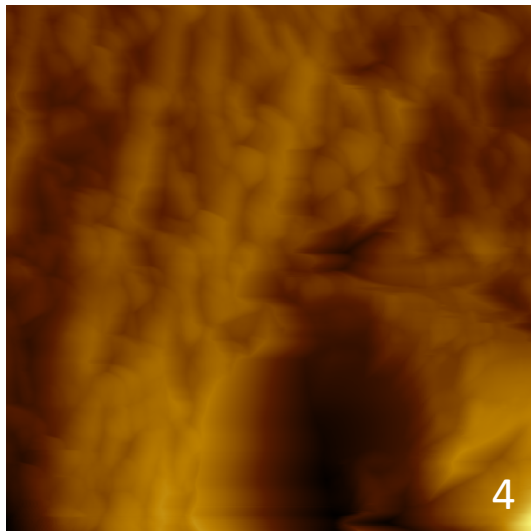
Scan area=10um;Scan speed=0.5 Hz;
Scan points=512;Scan direction=0°



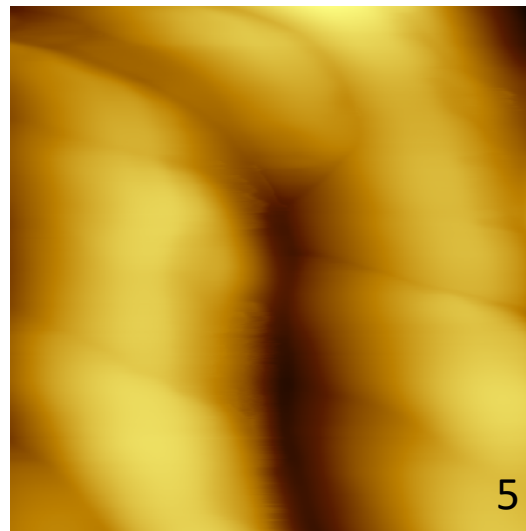
Scan area=10um;Scan speed=0.5 Hz;
Scan points=512;Scan direction=90°



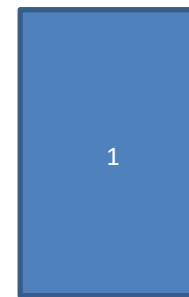
Scan area=1um;Scan speed=0.5 Hz;
Scan points=512;Scan direction=90°



Scan area=10um;Scan speed=0.5 Hz;
Scan points=512;Scan direction=0°

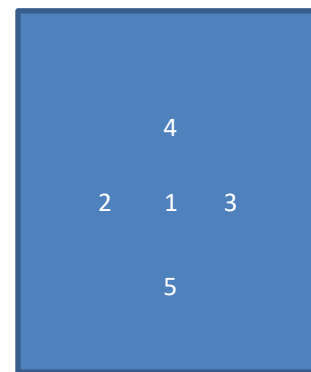
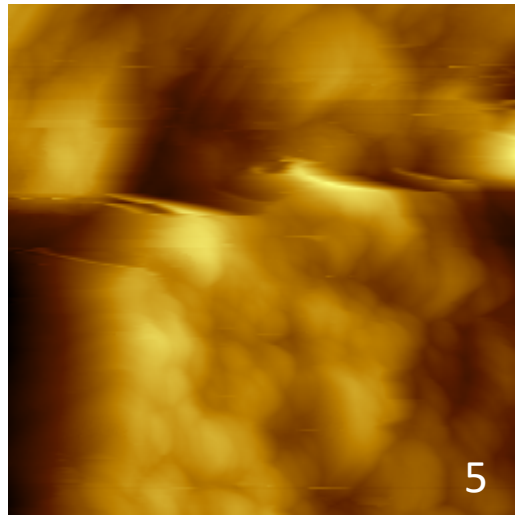
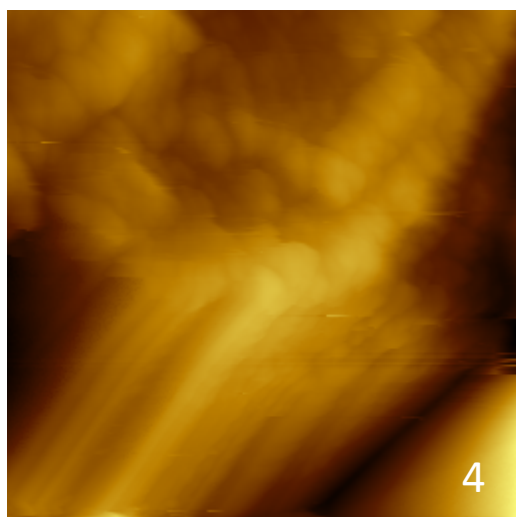
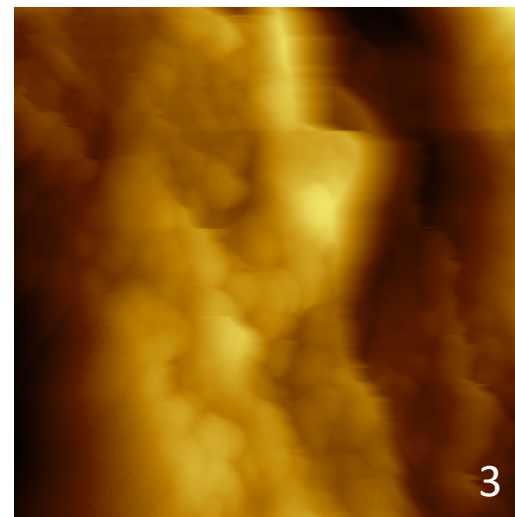
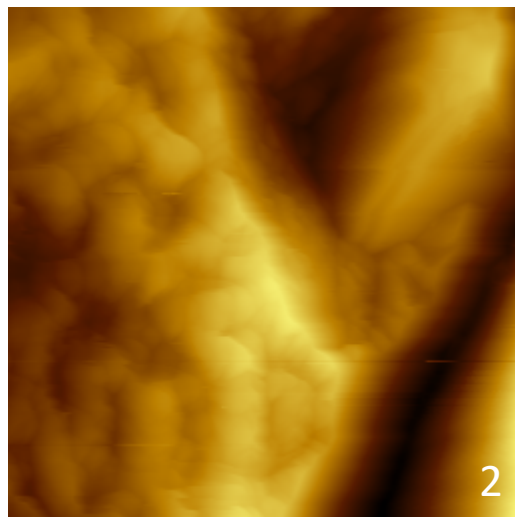
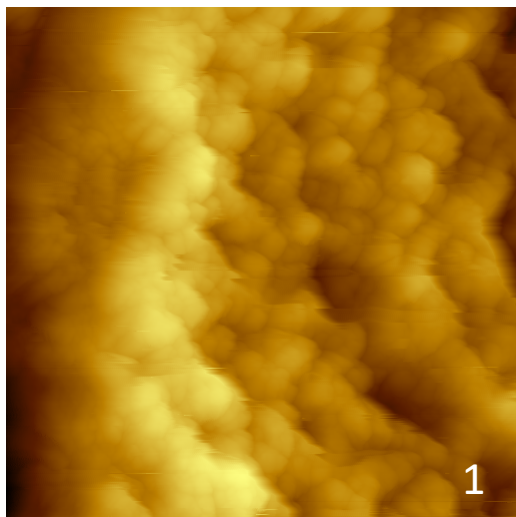


Scan area=1um;Scan speed=0.5 Hz;
Scan points=512;Scan direction=0°



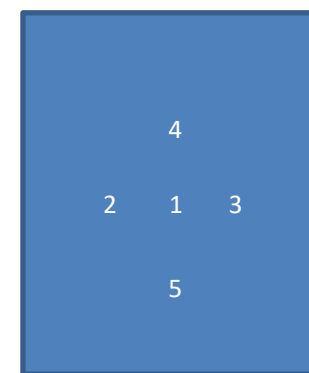
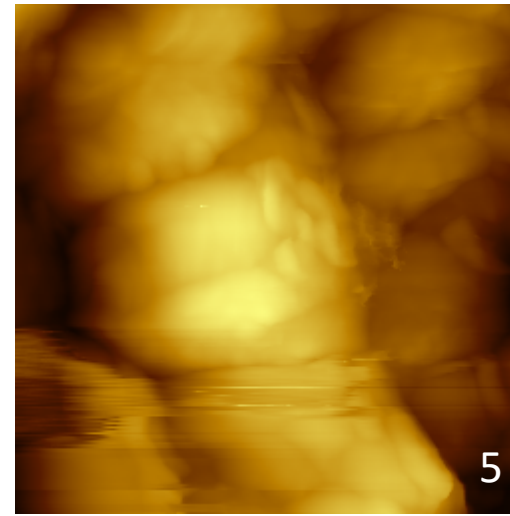
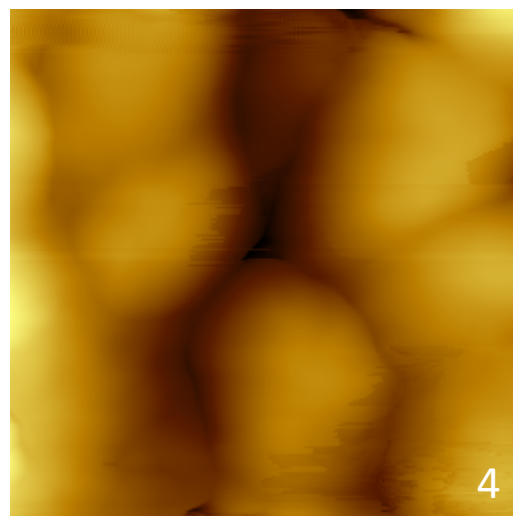
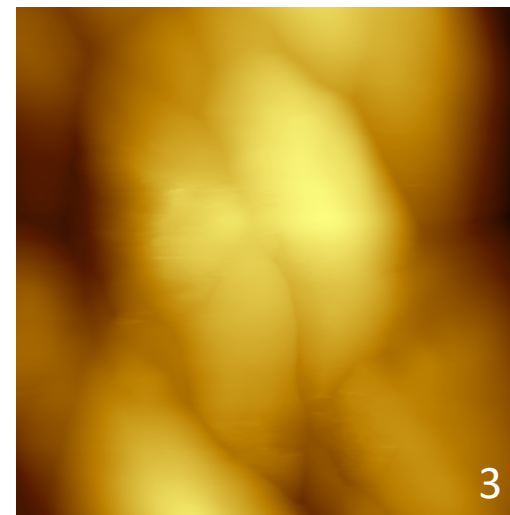
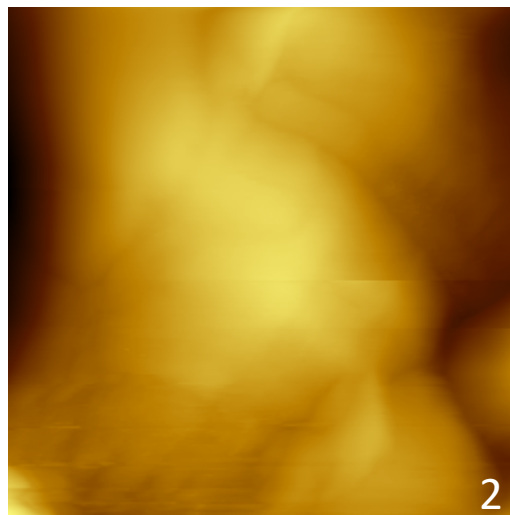
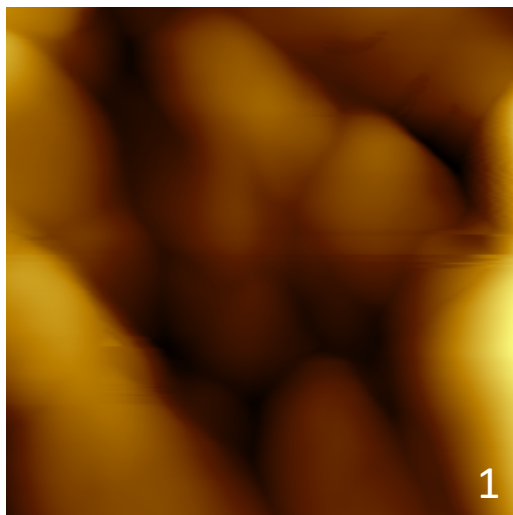
Scan Area

Pd90Rh10 #60 after electrolysis experiment with standard Si probe 150Al-G
Scan area=10um;Scan speed=0.5 Hz; Scan points=512;Scan direction=0°



Scan Area

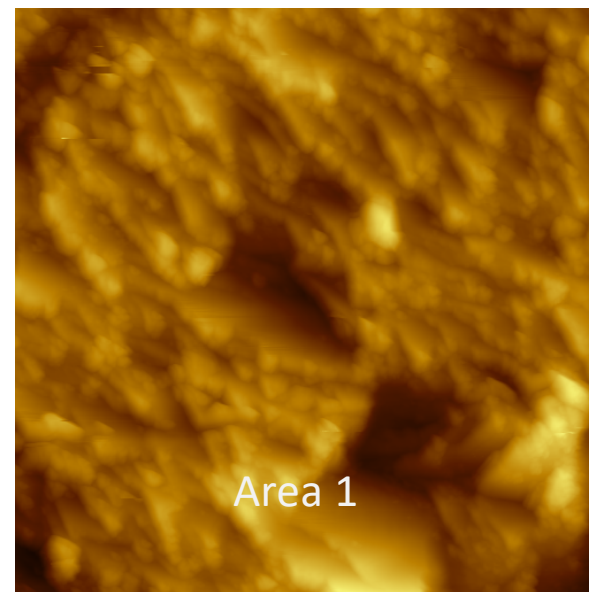
Pd90Rh10 #60 after electrolysis experiment with standard Si probe 150Al-G
Scan area=1um;Scan speed=0.5 Hz; Scan points=512;Scan direction=0°



Scan Area

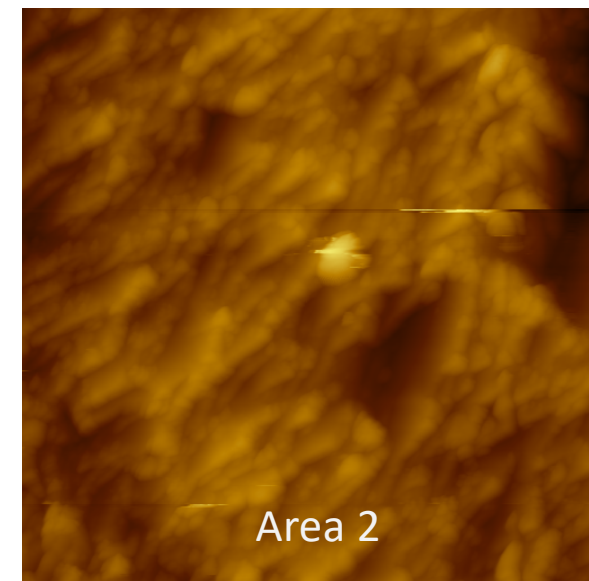
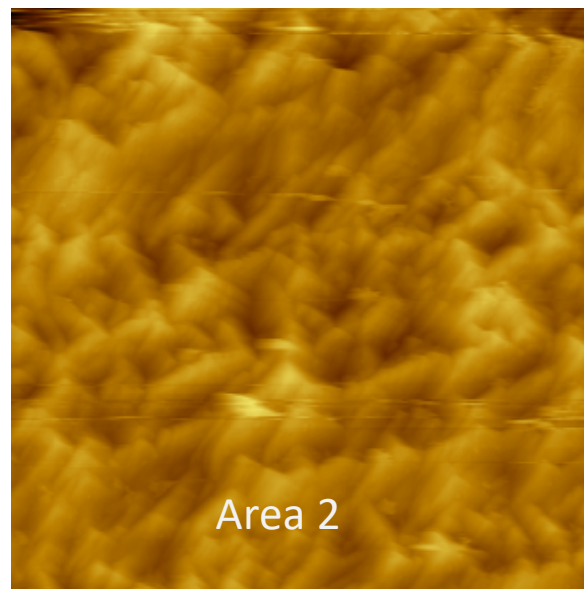
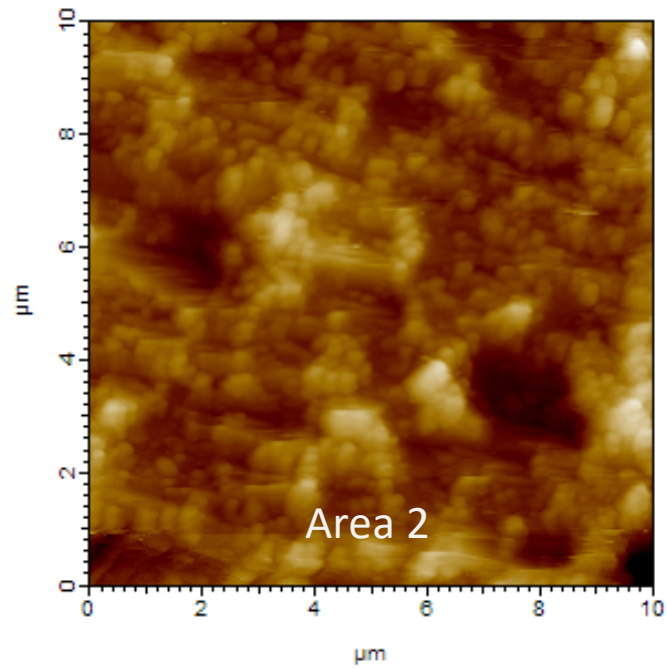
Before electrolysis, 10 micron scans

60, Tip 2



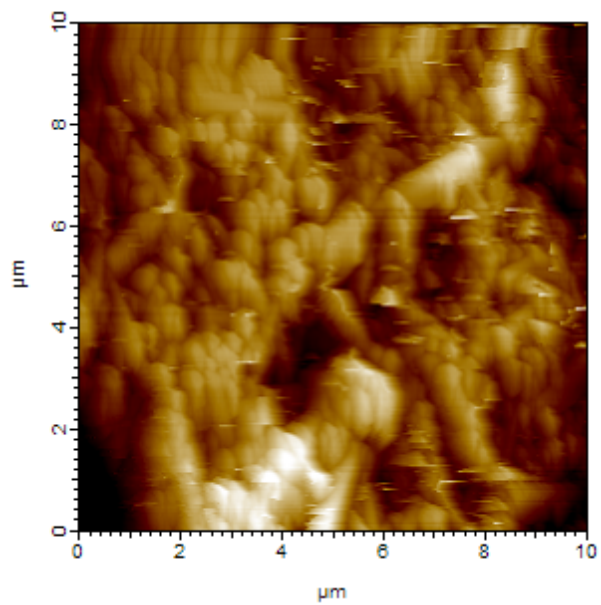
59

60, Tip 1



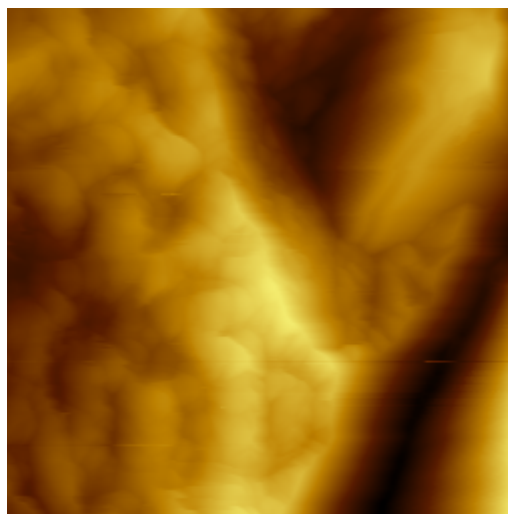
After electrolysis, 10 micron scans

59



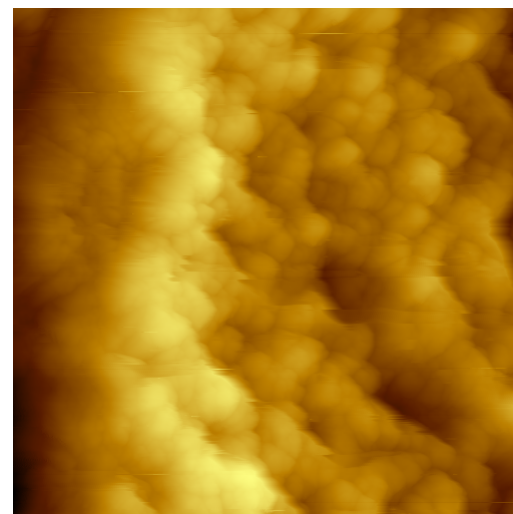
Area 2

60, Tip 1



Area 2

60, Tip 1



Area 1